



PROTECTIVE INDUSTRIAL PRODUCTS

FALL & WINTER PROMOTION

Valid August 1, 2021 - January 31, 2022

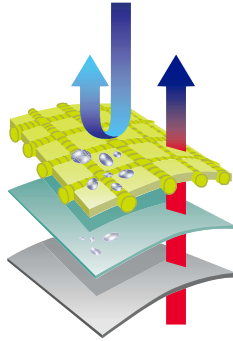
Best Prices. Best Products. Best Selection.

RIPSTOP SOFTSHELL

RIPSTOP SHELL

WATERPROOF COATING

INTERIOR LAYER



TYPE R CLASS 3 BLACK BOTTOM SOFTSHELL FLEECE LINED JACKET

- Tri-laminate ripstop polyester softshell with an inner polyester grid fleece lining and TPU (Thermoplastic polyurethane) membrane
- TPU membrane makes this jacket extremely water resistant, windproof and breathable
- Grid fleece lining reduces fabric weight while increasing warmth and enhances both wicking efficiency and breathability
- 2" segmented reflective material
- Waterproof zippers
- Removable fleece lined adjustable hood with zipper attachment
- Two outside chest pockets and two lower hand warmer pockets with waterproof zippers
- Three large inside lower pockets including a computer tablet pocket

ITEM NUMBER	COLOR	SIZE
333-1550-LY	■ Hi-Vis Yellow	S - 5XL

OUR RIPSTOP DIFFERENCE

Reinforcement threads are interwoven at regular intervals in a crosshatch pattern, making it resistant to tearing and ripping.

TYPE O CLASS 1 RIPSTOP TWO TONE 3-IN-1 JACKET

- Ripstop 150 D. Polyester, Heavy Duty wear with a lighter weight feel
- Removable grid fleece jacket with 3 pockets
- Removable Adjustable Hood
- Double front storm flap with zipper closure

ITEM NUMBER	COLOR	SIZE
331-1772-BK	■ Black	S - 5XL

TYPE R CLASS 3 RIPSTOP TWO TONE 3-IN-1 JACKET

- Ripstop 150 D. Polyester, Heavy Duty wear with a lighter weight feel
- Removable grid fleece jacket
- Zippered tablet pocket
- Two tone 2" silver reflective tape
- Double front storm flap with zipper closure

ITEM NUMBER	COLOR	SIZE
333-1772-LY	■ Hi-Vis Yellow	S - 5XL
333-1772-OR	■ Hi-Vis Orange	S - 5XL

Adjustable
waist and cuff
grid fleece liner

Removable
grid fleece liner



REMOVABLE FLEECE LINER



D-ring
access



TYPE R CLASS 3 RIP STOP PREMIUM PLUS BLACK BOTTOM BOMBER JACKET

- Ripstop polyester 300 D. waterproof outer shell with taped seams
- Double front storm flap zipper closure
- Removable black 280g fleece liner
- Water tight D-ring access
- Adjustable hideaway hood
- I.D. pocket and radio/cell pocket
- Mic tabs with reinforced stitching
- 2 hand warmer pockets and inner pocket

ITEM NUMBER	COLOR	SIZE
333-1770-LY	Hi-Vis Yellow	S - 5XL
333-1770-OR	Hi-Vis Orange	S - 5XL



TYPE R CLASS 3 VALUE 2-IN-1 BOMBER WITH BLACK BOTTOM

- Durable waterproof 300 D. polyester outer shell with taped seams
- Black trim & bottom helps conceal dirt
- Removable 280g black fleece liner
- Zipper closure with inner storm flap
- 2" silver reflective tape
- Adjustable hideaway hood
- Mic Tabs with reinforced stitching
- 5 pockets with radio and pen pockets

ITEM NUMBER	COLOR	SIZE
333-1766-LY	Hi-Vis Yellow	S - 6XL
333-1766-OR	Hi-Vis Orange	S - 6XL



TYPE R CLASS 3 VALUE 2-IN-1 BOMBER JACKET

- Durable waterproof 300 D. polyester outer shell with taped seams
- Removable 280g black fleece liner
- Black knit waist band and cuff
- Zipper closure with inner storm flap
- 2" silver reflective tape
- Adjustable hideaway hood
- Mic Tabs with reinforced stitching
- 5 pockets with radio and pen pockets

ITEM NUMBER	COLOR	SIZE
333-1762-LY	Hi-Vis Yellow	S - 6XL
333-1762-OR	Hi-Vis Orange	S - 6XL

BUILT-IN INSULATION



TYPE R CLASS 3 BLACK BOTTOM COAT

- Durable waterproof 300 D. polyester shell with taped seams
- Built-in quilted high loft polyfil insulation
- 2" silver reflective tape
- Radio pocket and waterproof zippered chest pocket
- Tablet pocket accessible from outside
- Mic Tabs

ITEM NUMBER	COLOR	SIZE
343-1750-LY	Hi-Vis Yellow	S - 5XL
343-1750-OR	Hi-Vis Orange	S - 5XL



TYPE R CLASS 3 VALUE BLACK BOTTOM BOMBER JACKET

- Durable waterproof 300 D. polyester shell with taped seams
- Built-in quilted high loft polyfil insulation
- 2" silver reflective tape
- Zipper closure with inner storm flap
- 5 pockets
- Mic Tabs

ITEM NUMBER	COLOR	SIZE
333-1740-LY	Hi-Vis Yellow	S - 6XL
333-1740-OR	Hi-Vis Orange	S - 6XL

STANDARD & X-BACK DESIGNS



▲ 333-1745-LY

▲ 333-1745X-OR

TYPE R CLASS 3 VALUE BLACK BOTTOM TWO-TONE INSULATED JACKETS

- Durable waterproof 300 D. polyester with taped seams
- Built-in quilted high loft polyfil insulation
- High fleece lined collar with rollaway hood
- Zipper closure with inner storm flap and snaps
- Two tone 2" silver reflective tape
- Radio/Cell Pocket with ID pocket, 2 hand-warmer pockets, 2 pen pockets on sleeve
- Mic Tabs

ITEM NUMBER	COLOR	FEATURES	SIZE
333-1745-LY	Hi-Vis Yellow	Standard Back	S - 5XL
333-1745-OR	Hi-Vis Orange	Standard Back	S - 5XL
333-1745X-LY	Hi-Vis Yellow	X-Back Design	S - 5XL
333-1745X-OR	Hi-Vis Orange	X-Back Design	S - 5XL



CLASS 3
COAT



CLASS 2
JACKET

CLASS 2
VEST

ALL SEASONS 7-IN-1 COAT FULLY REVERSIBLE TO BLACK

- Durable waterproof 300 D. polyester with taped seams
- Lined with polyester mesh and taffeta nylon
- High fleece lined collar with rollaway hood
- Heavy duty zipper closure with storm flap
- 2" 3M Scotchlite™ silver reflective material
- 4 pockets
- Inner Class 2 Jacket or vest reversible to black with zip off sleeves


ITEM NUMBER	COLOR	SIZE
343-1756-YEL	Hi-Vis Yellow	S - 5XL
343-1756-OR	Hi-Vis Orange	S - 5XL

4-IN-1 JACKET

REVERSIBLE & CONVERTIBLE

TYPE R CLASS 3 MULTI-FUNCTION REVERSIBLE 4-IN-1 JACKET


- Heavy duty PU coated polyester outer for wind and rain protection
- Hi-vis lime yellow with dark gray bottom, collar and cuffs help hide dirt
- 2" silver reflective tape
- 2 external flap pockets
- 1 upper chest radio pocket
- Zipper closures, storm flap, and elastic cuff
- Reversible to dark gray with 2 slash pockets and a chest pocket
- Detachable zippered sleeves
- Adjustable bottom hem

ITEM NUMBER	HI-VIS COLOR	REVERSED COLOR	SIZE
333-1500-R	 Lime Yellow	 Gray	S - 5XL

1
HI-VIS JACKET2
DARK GRAY JACKET3
HI-VIS VEST4
DARK GRAY VEST


TYPE P CLASS 2 SOFTSHELL JACKET

- Tri-Laminate Softshell outer/
PU/Polyester fleece inner
- Lightweight warmth, weather
resistant for multi-seasonal use
- 2 lower pockets and 1 chest
pocket with zippers
- Adjustable waist and cuffs
- Zipper closure

ITEM NUMBER	COLOR	SIZE
3SS7000	 Hi-Vis Yellow	M - 3XL

CLASS E INSULATED WATERPROOF PANT

- Durable waterproof
300 D. polyester shell
with taped seams
- Fixed quilted insulation
- 2" silver reflective tape

ITEM NUMBER	COLOR	SIZE
3NR4000	 Hi-Vis Yellow	S - 3XL



SWEATSHIRTS

Black bottom helps hide dirt



NEW

TYPE R CLASS 3 BLACK BOTTOM REVERSIBLE FULL ZIP HOODED SWEATSHIRT

- Water repellent treatment sheds light rain and snow
- Reverses to black quilted lightweight nylon shell with 2 hand warmer pockets
- 2" segmented reflective tape
- Zipper closure
- Removable hood with snap attachment

ITEM NUMBER	COLOR	TAPE	SIZE
323-1400S-LY	Hi-Vis Yellow	2"	S-5XL



ANSI TYPE R CLASS 3 GRID FLEECE BLACK BOTTOM FULL ZIP HOODED SWEATSHIRT

- Removable hood with zipper attachment
- Stand up collar
- 8 oz. grid fleece

ITEM NUMBER	COLOR	TAPE	SIZE
323-1385B-LY	Hi-Vis Yellow	2" silver	S-5XL



WATER REPELLENT OUTER SHELL
with grid fleece lining



X-BACK
(ALL STYLES)

▲ 323-1475X-LY

▲ 323-1475X-OR

▲ 323-1475X-BK

ANSI TYPE R CLASS 3

X-BACK THERMAL GRID FLEECE LINED BLACK BOTTOM FULL ZIP HOODED SWEATSHIRT - 14 OZ.

- 14 oz. total—10 oz. fleece with a laminated 4 oz. grid fleece material
- Removable hood with zipper attachment
- Stand-up collar
- Water repellent breathable fleece material
- Two-tone reflective
- CSA Z96 Class 2

ITEM NUMBER	ANSI 107	CSA Z96	COLOR	TAPE	FEATURE	SIZE
323-1475X-LY	Type R Class 3	Class 2	Hi-Vis Yellow	2" two-tone	X-back	S - 5XL
323-1475X-OR	Type R Class 3	Class 2	Hi-Vis Orange	2" two-tone	X-back	S - 5XL
323-1475X-BK	Type O Class 1	Class 1	Black	2" two-tone	X-back	S - 5XL

BEST-SELLING SWEATSHIRTS



WATER
REPELLENT
OUTER SHELL



▲ 323-1370B LY



▲ 323-1330B LY



▲ 323-1350B LY

ANSI TYPE R CLASS 3 BLACK BOTTOM SWEATSHIRTS

- 10 oz. polyester fleece
- Water repellent shell treatment sheds light rain and snow
- 2" silver reflective tape
- Black bottom and cuffs to help hide dirt
- Front hand warmer pocket, 1 left zippered chest pocket

ITEM NUMBER	CLOSURE	COLOR	SIZE
323-1330B-LY	¼ Zipper	■ Hi-Vis Yellow	S - 5XL
323-1330B-OR	¼ Zipper	■ Hi-Vis Orange	S - 5XL
323-1350B-LY	Pullover	■ Hi-Vis Yellow	S - 5XL
323-1350B-OR	Pullover	■ Hi-Vis Orange	S - 5XL
323-1370B-LY	Full Zipper	■ Hi-Vis Yellow	S - 5XL
323-1370B-OR	Full Zipper	■ Hi-Vis Orange	S - 5XL



▲ 323-HSSE



▲ 323-HSSP

BEST VALUE

TYPE R CLASS 3 HOODED SWEATSHIRTS

- 8 oz. polyester fleece
- 2" silver reflective tape (HSSE)
- 2" two-tone reflective tape for optimum visibility (HSSP)
- Zipper closure
- Hood with drawstring adjustment
- 2 front hand warmer pockets with side access

ITEM NUMBER	COLOR	TAPE	SIZE
323-HSSELY	■ Hi-Vis Yellow	2" silver	M-5XL
323-HSSEOR	■ Hi-Vis Orange	2" silver	M-5XL
323-HSSPLY	■ Hi-Vis Yellow	2" two tone	M-5XL



TYPE R CLASS 3 CLASSIC WIND BREAKER

- Lightweight polyester shell with nylon taffeta lining
- Convenient snap front closure
- Front slash pockets

ITEM NUMBER	COLOR	SIZE
333-WB-LY	■ Hi-Vis Yellow	M - 5XL
333-WB-OR	■ Hi-Vis Orange	M - 5XL



TYPE R CLASS 3 CREW NECK SWEATSHIRT

- 8 oz. polyester fleece
- 2" silver reflective tape

ITEM NUMBER	COLOR	SIZE
323-CNSSELY	■ Hi-Vis Yellow	M - 5XL

WEATHER RESISTANT OVERPANTS



WATER PROOF
OUTER SHELL



Removable bib

Reinforced in
high wear areas



RIPSTOP TWO TONE INSULATED BIB/PANT OVERALL

- Waterproof ripstop polyester with taped seams
- Ripstop 150 D. Polyester, Heavy Duty wear with a lighter weight feel
- Fixed quilted polyfil insulation
- 2" two tone silver reflective tape
- 2 side access pockets, 1 zippered back pocket, 2 cargo pockets & ID pocket
- Gusseted leg opening with hook and loop closure

ITEM NUMBER	COLOR	SIZE
318-1780-BK	■ Black	S - 5XL
318-1780-LY	■ Hi-Vis Yellow	S - 5XL
318-1780-OR	■ Hi-Vis Orange	S - 5XL

RIPSTOP INSULATED BIB/PANT OVERALL

- Waterproof 300 D. ripstop polyester with taped seams
- Fixed quilted polyfil insulation
- 2" two tone silver reflective tape
- 2 side access pockets, 1 zippered back pocket, 2 cargo pockets & ID pocket
- Gusseted leg opening with hook and loop closure

ITEM NUMBER	COLOR	SIZE
318-1775-YEL	■ Hi-Vis Yellow	S - 5XL



Reinforced in high wear areas

CLASS E RIPSTOP REINFORCED OVERPANT

- Waterproof 300 D. ripstop polyester with taped seams
- Reinforced wear area in black trim
- Lightweight polyester lining
- Gusseted leg opening with hook and loop closure
- 2" silver reflective tape
- Drawstring/elastic waist with front fly opening
- 2 side access pockets, 1 zippered back pocket, 2 cargo pockets

ITEM NUMBER	COLOR	SIZE
318-1771-LY	Hi-Vis Yellow	S - 5XL
318-1771-OR	Hi-Vis Orange	S - 5XL



CLASS E VALUE OVERPANT

- Waterproof 300 D. polyester with taped seams
- Lightweight nylon lining
- Black trim bottom
- 2 side access pockets
- Large leg opening with snap adjustment

ITEM NUMBER	COLOR	SIZE
318-1757-YEL	Hi-Vis Yellow	S - 5XL
318-1757-OR	Hi-Vis Orange	S - 5XL



ANSI 107 HI-VIS COMPLIANCE



PIP® VIZ TYPE R CLASS 3 TWO-PIECE VALUE RAINSUIT SET

- Lightweight polyester with waterproof PU coating and taped seams
- Zipper closure with storm flap
- Elastic waist pant with snap adjustable cuff
- Concealable hood for extra protection
- Rainsuit set includes jacket and pants

ITEM NUMBER	COLOR	SIZE
353-1000-LY	Hi-Vis Yellow	Dual S/M - 4X/5X
353-1000-OR	Hi-Vis Orange	Dual S/M - 4X/5X



PIP® VIZ TYPE R CLASS 3 VALUE ALL PURPOSE 48" RAINCOAT

- Lightweight polyester with waterproof PU coating and taped seams
- Zipper closure with storm flap with snaps
- Side access pockets
- Concealable hood for extra protection
- Badge holder

ITEM NUMBER	COLOR	SIZE
353-1048-LY	Hi-Vis Yellow	S-5XL
353-1048-OR	Hi-Vis Orange	S-5XL



RIPSTOP BLACK BOTTOM RAIN SET *(Items sold separately)*



Pants with
removable
suspenders

PIP® VIZ TYPE R CLASS 3 RIPSTOP BLACK BOTTOM RAIN JACKET

- Waterproof lightweight 150D ripstop shell

ITEM NUMBER	COLOR	SIZE
353-1200-LY	Hi-Vis Yellow	Dual S/M - 4X/5X
353-1200-OR	Hi-Vis Orange	Dual S/M - 4X/5X

CLASS E RIPSTOP BLACK BOTTOM RAIN PANTS WITH REMOVABLE SUSPENDERS

ITEM NUMBER	COLOR	SIZE
353-1202-LY	Hi-Vis Yellow	Dual S/M - 4X/5X
353-1202-OR	Hi-Vis Orange	Dual S/M - 4X/5X



DURABLE, WATERPROOF & BREATHABLE



D-ring
access

3M Scotchlite™
Reflective Material

PIP® VIZPLUS TYPE R CLASS 3 HEAVY DUTY WATERPROOF BREATHABLE JACKET

- Waterproof/Breathable 300 D. shell with lightweight lining
- 3M Scotchlite™ reflective material
- Water-tight D-ring harness access
- 4 pockets including ID holder
- Adjustable contoured hideaway hood
- Adjustable cuffs

ITEM NUMBER	COLOR	SIZE
353-2000-LY	Hi-Vis Yellow	S-5XL
353-2000-OR	Hi-Vis Orange	S-5XL



3M Scotchlite™
Reflective Material

PIP® VIZPLUS CLASS E HEAVY DUTY WATERPROOF BREATHABLE BIB

- Waterproof breathable heavy duty 300 D 100% polyester shell
- 3M Scotchlite™ reflective material
- Front fly opening with snap
- Front chest security pocket
- Adjustable cuffs

ITEM NUMBER	COLOR	SIZE
353-2001-LY	Hi-Vis Yellow	S-5XL
353-2001-OR	Hi-Vis Orange	S-5XL



3M Scotchlite™
Reflective Material

PIP® VIZPLUS CLASS E HEAVY DUTY WATERPROOF BREATHABLE PANTS

- Waterproof breathable heavy duty 300 D 100% polyester shell
- 3M Scotchlite™ reflective material
- Elastic waist with drawstring and snap-adjustable cuff
- Side access pockets

ITEM NUMBER	COLOR	SIZE
353-2002-LY	Hi-Vis Yellow	S-5XL
353-2002-OR	Hi-Vis Orange	S-5XL



HI-VISIBILITY RAINWEAR

PROTECTION FROM THE ELEMENTS WITH ANSI 107 COMPLIANCE FOR HIGH VISIBILITY

Available in a breathable and durable waterproof design, hi-visibility rainwear helps workers be seen and stay dry in inclement conditions.

FEATURES & BENEFITS

- All products meet the ANSI 107 standard for high visibility
- Provide lightweight waterproof protection

Be seen & stay dry in inclement conditions

BEST VALUE: 3 PIECE RAIN SET

(Items sold separately)



▲ WW4033J



▲ WW4033P

3-PIECE RAINSUIT

- ANSI/ISEA 107 Type R Class 3
- Lightweight polyester with waterproof PU coating
- 2" silver reflective stripes
- 2 flapped front pockets with snap closures to secure valuables
- Jacket with removable hood with snaps and chin strap for a secure fit
- Bib overall with adjustable elastic suspenders with quick release buckles

ITEM NUMBER	TYPE	HI-VIS COLOR	SIZE
4033	Set	■ Lime Yellow	S-6XL
WW4033J	Jacket	■ Lime Yellow	S-5XL
WW4033P	Pants	■ Lime Yellow	S-5XL



HI-VIS STRETCH RAIN JACKET

- Sleeve ends have elastic and hook and loop closures
- Hood has adjusters on both sides of the drawstring
- Breathable, wicking mesh lining
- Hook and loop closures on the storm flap of the jacket

ITEM NUMBER	HI-VIS COLOR	SIZE
4540J	 Lime Yellow	M-4XL

HI-VIS STRETCH BIB OVERALLS

- Elastic straps have silicone pattern to keep the pants in place while you work
- Chest pocket with water resistant zipper
- Zippered side pockets with mesh pocket bag
- Fly with 2 snap closure
- Reflective piping on zippered leg opening

ITEM NUMBER	HI-VIS COLOR	SIZE
4540B	 Lime Yellow	M-4XL

HI-VIS STRETCH RAIN PANTS

- Elastic waist with adjustment in waistband
- Fly with 2 snap closure
- Reflective piping on zippered leg opening

ITEM NUMBER	HI-VIS COLOR	SIZE
4540P	 Lime Yellow	M-4XL



WATERPROOF BREATHABLE STRETCH RAIN JACKET

- ANSI/ISEA 107 Type R Class 3
- Waterproof breathable heavy duty PU shell
- 3M Scotchlite™ Comfort Trim segmented stretch reflective silver tape
- Hood tucks into collar for easy storage
- Breathable and moisture-wicking mesh lining
- Storm flap with hook and loop closure

ITEM NUMBER	HI-VIS COLOR	SIZE
4541J	 Lime Yellow	M-4XL

WATERPROOF BREATHABLE STRETCH RAIN PANTS


- ANSI/ISEA 107 Class E
- Waterproof breathable heavy duty PU shell
- 3M Scotchlite™ Comfort Trim segmented stretch reflective silver tape
- Fly with two-snap closure

ITEM NUMBER	HI-VIS COLOR	SIZE
4541P	 Lime Yellow	M-4XL



FR TREATED 2-PIECE RAIN SUIT

- ANSI/ISEA 107 Type R Class 3
- Self Extinguishing ASTM D6413
- Lightweight polyester with waterproof PU coating and taped seams
- Hidden phone pocket on chest under storm flap
- Black bottom and cuffs on both the jacket and bibs to help hide dirt
- 2" silver reflective tape
- Hideaway hood

ITEM NUMBER	HI-VIS COLOR	SIZE
4530SE	 Lime Yellow	M-4XL

NON-FR 2-PIECE RAIN SUIT

4530	 Lime Yellow	M-4XL
-------------	---	-------

HI-VIS VESTS



**D-ring
access**

Reinforced
attachments for
tool keepers
or lanyards



NEW



ANSI TYPE R CLASS 2

TWO-TONE TOOL TETHERING VEST

- Breathable polyester mesh upper and back
- Ripstop black bottom offers added durability and tear resistance
- Multiple reinforced accessory loops and attachments
- Padded collar for comfort when vest is loaded down with tools
- 12 Pockets including expandable front pockets, inner tablet pocket and outside back reach-through pocket

ITEM NUMBER	COLOR	SIZE
302-0670T-LY	Hi-Vis Yellow	S-5XL
302-0670T-OR	Hi-Vis Orange	S-5XL

DISCLAIMER:

Not tested to any dropped object or tethering standard.



NEW



ANSI TYPE R CLASS 2 WOMEN'S CONTOURED SURVEYORS VEST

- Designed and sized specifically for women
- Solid front and mesh back for breathability
- Two-tone tape
- Adjustable waist for an enhanced fit
- 11 pocket design

ITEM NUMBER	COLOR	SIZE
302-0512-LY	Hi-Vis Yellow	S-3XL
302-0512-OR	Hi-Vis Orange	S-3XL



Designed and
sized for women

Designed and
sized for women



NEW



ANSI TYPE R CLASS 3 WOMEN'S CONTOURED SURVEYORS VEST

- Designed and sized specifically for women
- Solid front and mesh back for breathability
- Two-tone tape
- Adjustable waist for an enhanced fit
- 11 pocket design

ITEM NUMBER	COLOR	SIZE
303-0513-LY	Hi-Vis Yellow	S-3XL
303-0513-OR	Hi-Vis Orange	S-3XL

HI-VIS VESTS

Expand and wear over a jacket



ANSI TYPE R CLASS 2 EXPANDABLE BREAKAWAY MESH VEST

- Two tone tape
- 3 pockets: 1 outer chest radio/cell pocket with ID pocket, 1 inner chest pocket and 1 lower inner pocket
- Mic tabs
- Zipper breakaway closure

ITEM NUMBER	COLOR	SIZE
302-0590LY	Hi-Vis Yellow	M/XL, 2X/5X
302-0590OR	Hi-Vis Orange	M/XL, 2X/5X



ANSI TYPE R CLASS 2 EXPANDABLE MESH BREAKAWAY VEST

- Breathable polyester mesh
- Adjustable hook & loop sides for universal fit
- Hook and loop closure
- 2 interior pockets
- X-back reflective tape

ITEM NUMBER	COLOR	SIZE
47200	Hi-Vis Yellow	OS
47201	Hi-Vis Orange	OS

Breakaway provides additional safety around extreme traffic hazards



Black bottom helps hide dirt



NEW



ANSI TYPE R CLASS 3 LONG SLEEVE SHIRT WITH BLACK BOTTOM

- Durable lightweight performance wicking fabric
- Enhanced with UPF 50+ protection
- Black bottom helps hide dirt
- 2" Reflective tape

ITEM NUMBER	COLOR	SIZE
313-1390B-LY	Hi-Vis Yellow	S-6XL
313-1390B-OR	Hi-Vis Orange	S-6XL

REDUCE THE RATE OF COLD STRESS INJURY

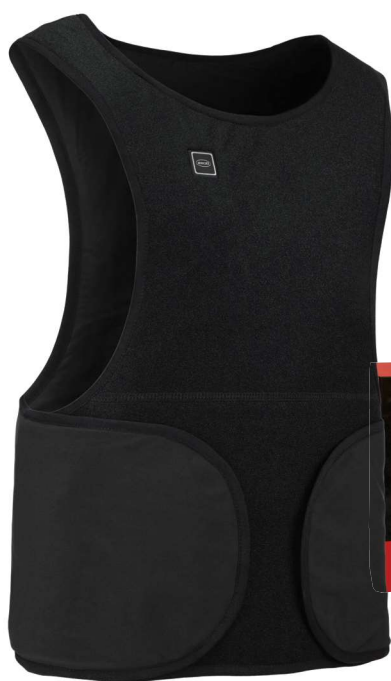
LONG-LASTING HEAT / LIGHTWEIGHT, ACTIVE FIT



LONG-LASTING HEAT



LIGHTWEIGHT, ACTIVE FIT



EFFECTIVE HEAT FOR UP TO
8+ HOURS
ON A SINGLE CHARGE



NEW

BOSS® Therm™ Heated Vest

- Designed to be worn as a baselayer over a shirt, or any thermal garment
- Lightweight, active fit one size fits all includes durable two-way locking velcro straps
- Heating elements located on the chest and back, warming a large surface area to promote blood circulation, relief from muscle pain, enhance metabolism and improve immunity
- Low, Medium, High temperature ranges
- Quick rechargeable 5V power bank provides 8+ hours of warmth on a single charge*
- Machine washable; Heating elements are designed to endure 50+ washing cycles
- Includes battery operated remote control and initial battery
- Additional batteries available: **399-HVBAT**
- Replacement remote: **399-HVRE**

ITEM #	MATERIAL	BATTERY	COLOR	SIZE
300-HV100	Nylon	5V Rechargeable	■ Black	OS

RECHARGABLE 5V BATTERY



- > Multi-step safety system ensures protection from short circuits

ACTIVE FIT

- > Easy to adjust, two way locking velcro provides a secure comfortable fit

WIRELESS REMOTE



- > Control 3 heat settings with the included wireless remote



3 HEAT SETTINGS

- > With three separate settings, choose your preferred temperature range.



LOW HEAT is light blue and uses 25% of the vest power for temperatures up to 90° F for up to 9 hours.



MEDIUM HEAT is white, using 50% of the vest power for temperatures up to 115° F for up to 5 hours.



HIGH HEAT temperature range indicated by the red color, for maximum warmth up to 135° F for 3+ hours.



▲ 360-BEANNIEBK



▲ 360-BEANNIELY



▲ 360-BEANNIEOR

Ideal for
**HIGH VISIBILITY
IN COLD
WEATHER
CONDITIONS**

WINTER BEANNIE CAP WITH REFLECTIVE STRIPE

- Knit Polyester cap
- Silver reflective piping for enhanced visibility
- One size fits most
- Non-FR

ITEM NUMBER	COLOR
360-BEANNIELY	■ Hi-Vis Yellow
360-BEANNIEOR	■ Hi-Vis Orange
360-BEANNIEBK	■ Black



FLAME RESISTANT KNIT WATCH CAP

- Modacrylic blend material
- Fits snugly
- Keeps head and ears protected from wind and cool conditions
- Meets ASTM F1506
- NFPA 70E

ITEM NUMBER	COLOR	SIZE
360-1500FR-BK	■ Black	OS



FLAME RESISTANT MULTI-USE CLIMA-BAND

- Absorbs sweat and wicks moisture away
- All-season seamless stretch head neck and face cover
- Inherent FR 50/50 Meta-Aramid & FR Lenzing fabric
- Fabric compliant to NFPA 2112
- Resists wind, sun and dust

ITEM NUMBER	COLOR	SIZE
395-250FR-B	■ Black	OS



SINGLE-LAYER AR/FR COTTON NECK GAITER - 13 CAL/CM2

- Lightweight 6.5 oz. 100% FR cotton knit
- Meets NFPA 70E & ASTM F1506
- Fabric meets NFPA 2112-2012
- Arc rating: ATPV 13 cal/cm2

ITEM NUMBER	COLOR	SIZE
385-NFGR-11-BK	■ Black	OS



▲ 364-1195



▲ 364-1180

PIP® THERMAL EXO BALACLAVA

- Dual-Layer Balaclava provides form-fitting comfort and protection from the extreme weather conditions sealing out the cold, wind, and snow
- Harnesses heat from the sun's powerful solar rays to create an exothermic warming effect, intensifying the warming effect of the material up to 15° F (10°C)
- Soft, breathable mesh inner layer
- Wear as a neck gaiter or a full-face mask
- Lightweight fabric fits comfortably under a hard hat or helmet
- Machine washable

ITEM NUMBER	COLOR	SIZE
364-1195	■ Black	OSM

PIP® VALUE WINTER BALACLAVA

- Protective wind-resistant fabric provides form-fitting comfort and protection from extreme weather conditions
- Soft, breathable mesh inner layer
- Can be worn in multiple ways, open face balaclava, neck gaiter or full-face mask
- Lightweight fabric fits comfortably under a hard hat or helmet
- Flexible material will stretch to fit most head sizes
- Machine washable

ITEM NUMBER	COLOR	SIZE
364-1180	■ Black	OSM

**WORK CONFIDENTLY.
WORK SECURELY.**



▲ 230-FPC-HVC-5



▲ 230-FPC-BK-5



▲ 230-FPC-AG-5



REUSABLE KNIT FACE COVER WITH FILTER POCKET

- Made in the USA from 100% moisture-wicking polyester, soft against the skin and breathable
- Double layered with a functional filtration pocket, paper filters are recommended - filter not included
- Provides coverage over the ears, nose, and mouth, for added warmth and comfort in cold temperatures
- Washable/reusable - easy to machine wash and tumble dry
- Designed for general use, not intended to replace N95 or other NIOSH approved respirator mask

ITEM NUMBER	COLOR
230-FPC-HVC-5	■ Hi-Vis Yellow
230-FPC-BK-5	■ Black
230-FPC-AG-5	■ Army Green

Comfortable protection from the cold, wind, and snow



▲ 365-1510FR-BK



▲ 395-1520FR-BK



▲ 365-1505-BK

DESIGNED TO FIT OVER HARD HATS

RIB KNIT HARD HAT TUBE LINERS - FR AND NON-FR

- Meets ASTM F1506 / NFPA 70E
- PPE 2
- FR liners– Modacrylic blend rib knit
- Non-FR liners– Acrylic rib knit
- Stretches to fit snugly over most hard hat styles
- Keeps ears and protected from wind and cool conditions

AR/FR RIB KNIT HARD HAT TUBE LINERS

ITEM NUMBER	COLOR	DESCRIPTION
365-1510FR-BK	■ Black	FR Knit Hard Hat Tube Liner
365-1520FR-BK	■ Black	FR Knit Full Face Tube Liner

NON-FR RIB KNIT HARD HAT TUBE LINERS

365-1502-BK	■ Black	NON FR Knit Full Face Tube Liner
365-1505-BK	■ Black	NON FR Knit Hard Hat Tube Liner





Provide protection from extreme weather conditions

STYLES WITH ADDITIONAL FEATURES



▲ **364-ML2MP**
Mid-Length with Mouthpiece

▲ **364-1170**
3-in-1 Balaclava

▲ **365-1620**
Zip On/Off Extended Neck Liner

▲ **363-1RL2B**

▲ **363-1RL3QB**



FR Treated/Self-Extinguishing (Outer shells only):

Outer shell tested to retain their FR characteristics for 1, 10, or 30 washes

Non-FR:

Hats, caps and a few select winter liners are not treated, for use in applications that do not require the added protection

WARM

ITEM NUMBER	FR TYPE	LENGTH	COLOR	LAYERS	OUTER	MIDDLE	INNER
364-SL1FB	Non-FR	Extended	■ Navy	1	Fleece	--	--
363-1RL2B	1 Wash	Regular	■ Navy	2	Cotton Twill	--	Fleece
364-RL2B	30 Washes	Regular	■ Navy	2	Cotton Twill	--	Fleece

WARMER

364-1170	Non-FR	Extended Adjustable 3-in-1 Balaclava	■ Black	1	Polyester Fleece	--	--
363-1RL3QB	1 Wash	Regular - Quilted	■ Black	3	Polyester	Foam	Fleece
363-1ML2FB	1 Wash	Mid	■ Navy	2	Cotton Twill	--	Fleece
363-1SL2FB	1 Wash	Extended	■ Navy	2	Cotton Twill	--	Fleece
364-RL3QB	10 Washes	Regular Quilted	■ Black	3	Polyester	Foam	Fleece
365-1620	10 Washes	Mid Zipper 2-in-1	■ Navy	2	Cotton Twill	Fleece	Acrylic Neck
364-ML2FB	30 Washes	Mid	■ Navy	2	Cotton Twill	--	Fleece
364-SL2FB	30 Washes	Extended	■ Navy	2	Cotton Twill	--	Fleece

WARMEST

364-ML2FMP	30 Washes	Mid - Mouthpiece	■ Navy	2	Cotton Twill	--	Fleece
364-ML2SB	30 Washes	Mid	■ Navy	2	Cotton Twill	--	Sherpa Pile
364-SL2SB	30 Washes	Extended	■ Navy	2	Cotton Twill	--	Sherpa Pile

LENGTHS



Regular:
Hits at base of head

▲ 364-RL2B



Mid-Length:
Hits just below
nape of neck

▲ 364-ML2FB



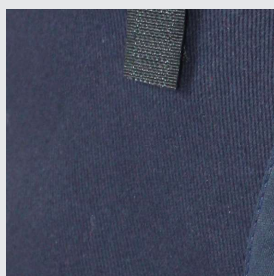
Shoulder Length:
Wraps around to front and
can be tucked into jacket

▲ 364-SL2SB

MATERIAL & CONSTRUCTION

Winter liners are available in 1, 2, or 3 layer constructions.

OUTER LAYERS



Cotton Twill

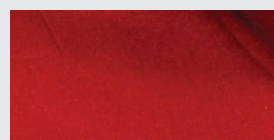


Polyester (Quilted)

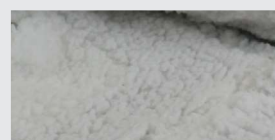


Polyester Fleece

INNER LAYERS



Fleece



Sherpa Pile Fleece



AVAILABLE WITH
EAR WARMER POCKETS

Cold weather protection for HANDS AND ARMS

PIP® is committed to developing and providing hand and arm protection products that deliver maximum performance in the harshest conditions and in the widest array of applications.



**CUT
HAZARDS**



**IMPACT
HAZARDS**



**MECHANICAL
HAZARDS**



**INSULATED/COLD
HAZARDS**



KUT GARD® SLEEVE

- Proprietary Pritex™ blend with antimicrobial fibers provides exceptional comfort and will not cause skin irritation
- Blousy construction offers a loose fit to reduce fatigue
- Excellent abrasion and fatigue resistance

ITEM #	COLOR	SIZE
15-2BKLTO	■ Black	L
15-2WLTO	□ White	L



ACRYLIC GLOVE - 13 GAUGE

- Excellent thermal insulation, used as the primary glove or as a glove liner
- Extra softness for non-chafing comfort
- Launderable for extended life and to reduce replacement costs

ITEM #	COLOR	SIZE
41-001	■ Black	M - L
41-001NB	■ Navy Blue	L
41-001W	□ White	L



KNIT MERINO® - 13 GAUGE

- Merino® Wool provides superior insulating properties even when wet and withstands moderately high temperatures
- Seamless construction for a comfortable fit
- Quickly evaporates moisture from the skin

ITEM #	COLOR	SIZE
41-130	■ Black	L



KNIT THERMASTAT® GLOVE - 13 GAUGE

- Thermastat® helps keep moisture away from the hands, keeping hands warm, dry and comfortable
- Extra softness for non-chafing comfort
- Launderable for extended life and to reduce replacement costs

ITEM #	COLOR	SIZE
713STO	■ Hi-Vis Orange	L
713STB	■ Black	L
713STW	□ White	L



YARN/ELASTANE GLOVE - 13 GAUGE

- Extra softness for non-chafing comfort
- Quickly evaporates moisture from the skin
- Ambidextrous pattern permits glove to be worn on either hand, extending wear and reducing costs

ITEM #	COLOR	SIZE
41-002	White	L



SEAMLESS KNIT POLYKOR® GLOVE WITH ACRYLIC LINING AND PVC FOAM GRIP

- Double-layered 13-gauge nylon shell with a 7-gauge acrylic terry liner
- PVC foam is water resistant and flexible in extremely cold conditions

ITEM #	COLOR	SIZE
41-7322	Black	L-2XL



HI-VIS THERMAL GLOVE WITH FLEECE LINING AND WATERPROOF BLADDER

- Lining is waterproof, windproof and breathable to keep hand dry
- Fleece lining provides excellent warmth
- Lightweight synthetic leather palm enhances grip in dry and light oil applications

ITEM #	COLOR	SIZE
96652	Black/Hi-Vis Yellow	S-2XL



HIGH PERFORMANCE GRAIN COWHIDE LEATHER PALM GLOVE WITH SOLARCORE LINING

- Revolutionary Solarcore insulation keeps the hands warm without adding bulk
- Adjustable hook and loop wrist for the perfect fit
- Reinforced neoprene knuckle for added protection

ITEM #	COLOR	SIZE
96001	Natural / Black	L-XL



SEAMLESS KNIT POLYKOR® GLOVE WITH ACRYLIC LINING AND DOUBLE-DIPPED NITRILE FOAM GRIP

- Hi-Vis wrist for added visibility in poor conditions
- Double-dipped full hand coating provides liquid protection
- Excellent thermal insulation

ITEM #	COLOR	SIZE
41-1415	Hi-Vis Yellow / Black / Blue	S-2XL



SEAMLESS KNIT POLYKOR® GLOVE WITH ACRYLIC LINING AND DOUBLE-DIPPED LATEX MICROSURFACE GRIP

- Single-layer construction provides excellent dexterity
- Full hand coverage keeps the hands warm and dry
- Latex MicroSurface coating provides a superior grip in dry and wet conditions

ITEM #	COLOR	SIZE
41-8035	Gray / Black / Blue	S-2XL



HEAT PACKS

HEAT PACKS - AIR ACTIVATED HAND WARMERS

- Ideal size for our headwear and gloves
- Air activated and reach full temperature in 2-5 minutes
- Generates over 8 hours of warmth
- Heating can be suspended at any time by resealing the inserts in an airtight container
- Non-toxic
- Insert size: 2" x 3.5" (5.1cm x 8.9cm)
- Available in 40 pair display cases (5.6 lbs., 2.5 kg) and 240 pair bulk cases (35 lbs., 15.9 kg)

ITEM NUMBER	COLOR	DESCRIPTION
399-HEATPACK	Orange	Heat Pack Mini Hand Warmers, 8 Hours of Warmth, Air Activated



REMOVE FROM
PACKAGE TO
ACTIVATE



STARTS
WORKING
IN MINUTES



PROVIDES
8+ HOURS
OF WARMTH

Distributed by:



PROTECTIVE INDUSTRIAL PRODUCTS, INC.

968 Albany Shaker Road | Latham, NY 12110

Customer Service Direct | 855-284-6800

customerservice@pipusa.com | www.pipusa.com